



[www.ffiya.com](http://www.ffiya.com)



[contact@ffiya.com](mailto:contact@ffiya.com)



**Headquarters**

11 North Bridge Road,  
Peninsula Plaza,  
Singapore 179098

**Offshore development  
center**

Logix TechnoPark,  
Tower D, Sector 127  
Noida-201301, U.P., India

# Compliance Suite

One stop shop for your compliance needs and  
smooth operations





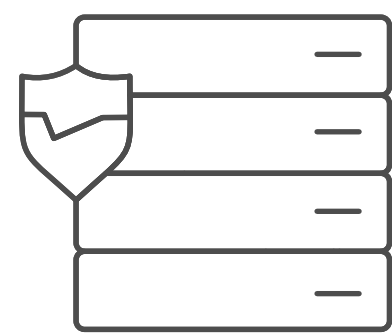
# Are you looking for a solution to fulfil regulatory compliance and maximizing operational efficiency?

Effiya's Compliance Suite offers a one stop shop to de-risk institutions from financial crimes and ensure regulatory compliance across the customer journey

*Customer journey and respective products*



1 year product warranty



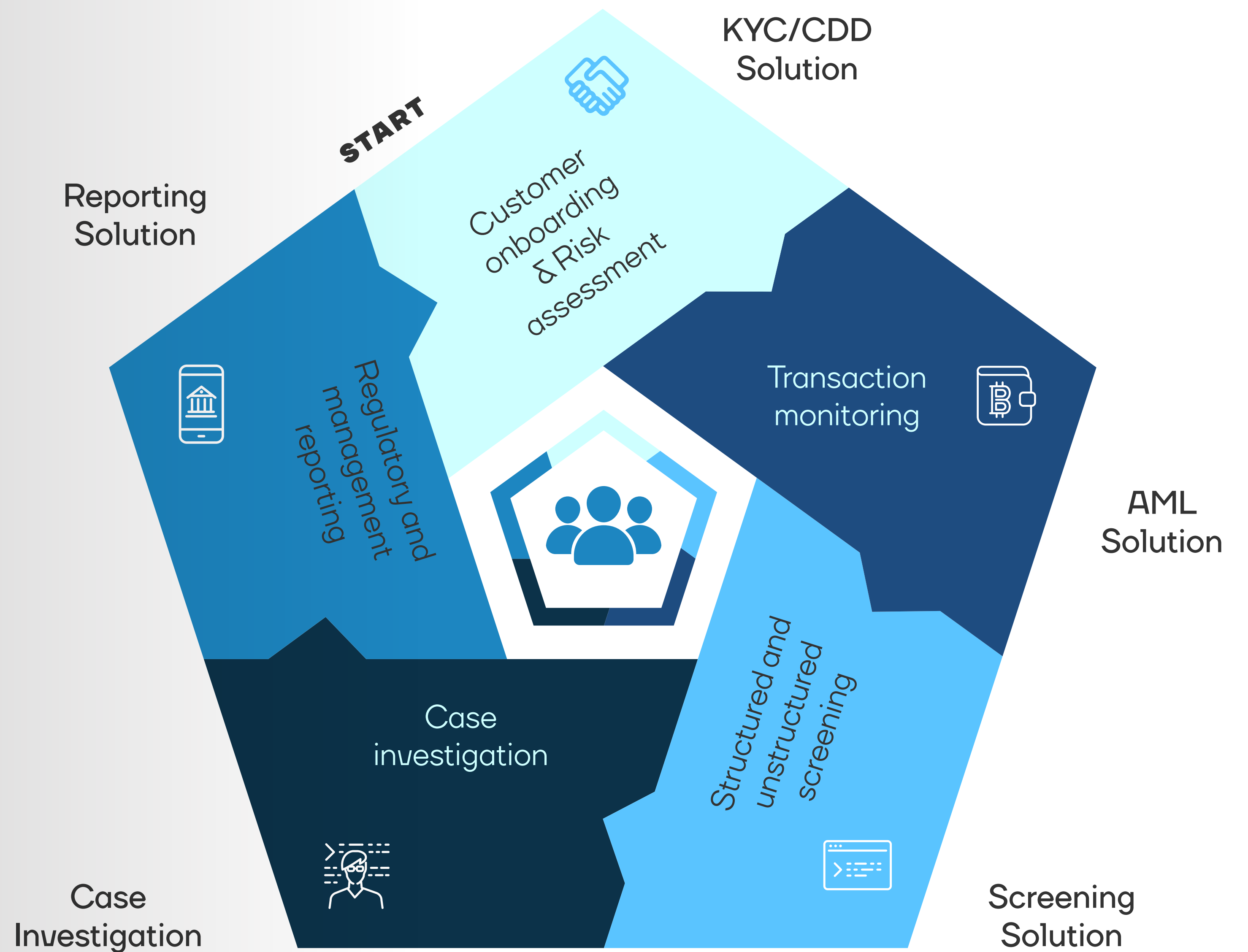
1 second run time for realtime screening



On prem or cloud implementation



Managed services subscription options available







### KYC/CDD SOLUTION

- Customer onboarding using interactive KYC application
- Risk assessment engine & easy configurable scorecards
- Auto initiation of enhanced due diligence
- API end points available for seamless integration with core systems



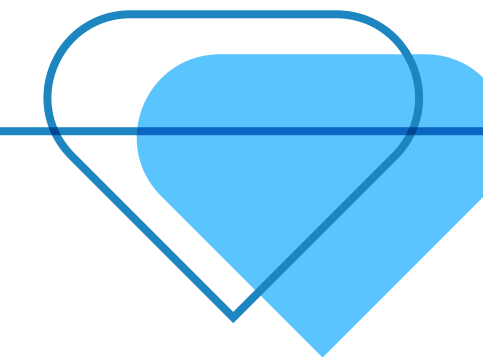
### AML SOLUTION

- Drag and drop interface to configure business rules
- Pre configured scenarios with switch on-off facility
- AI interface to implement models on the fly



### SCREENING SOLUTION

- Realtime screening for onboarding customer and transactions
- Fuzzy match sensitivity based on customer risk classification
- Text mining algorithms that can handle structured and unstructured text
- Comes with out of box sanction lists



## M O D U L E S F O R E V E R Y P R O D U C T

### Case Investigation

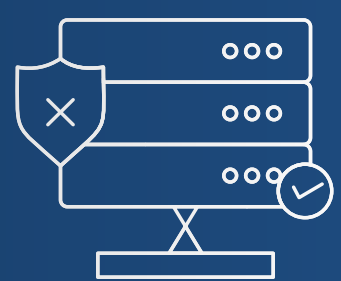
- Automated workflow for investigating suspicious transactions
- Self learning models to automatically identify false positives

### Reporting Solution

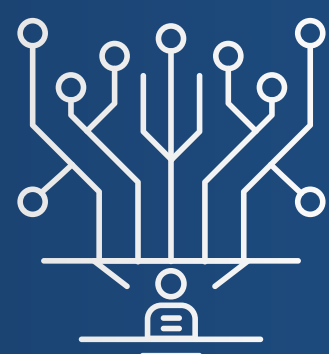
- Comes with out of box management reports, audit reports & dashboards
- Feature to initiate suspicious transaction report (STR)

### Management Console

- Single interface for managing users and roles for all applications
- Integration with active directory
- IT reports to track user access



**01** Strong data management platform that overcomes data silos



**02** Seamless integration with compliance touchpoints through lifecycle



**03** 24\*7 phone and email support